



BV1525 SERIES

HCMOS/TTL DIL-14 VCXO



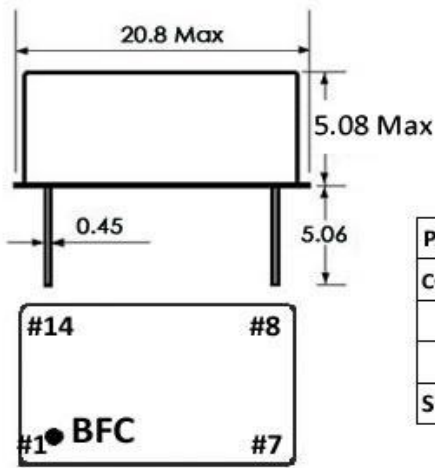
- HERMETICALLY SEALED DIL-14 THRU-HOLE PACKAGE
- HCMOS / TTL SQUAREWAVE OUTPUT
- 3.3 OR 5.0V DC SUPPLY VOLTAGE
- RoHS Compliant
- WIDE ARRAY OF PULLABILITY OPTIONS (50-300ppm)
- FREQUENCY STABILITY AS TIGHT AS ± 10 ppm
- -40 TO +85°C TEMPERATURE RANGE AVAILABLE
- OPEN CRYSTAL DESIGN

BV1525 VCXO SERIES							
Frequency Range	500kHz to 180.0MHz						
Output Wave Form	HCMOS/TTL SQUAREWAVE						
Supply Current	20mA Max @ 20MHz						
Load	15pF/10TTL(Standard)						
Pull Range(minimum)	± 50 ppm / ± 75 ppm / ± 100 ppm / ± 150 ppm / ± 200 ppm / ± 250 ppm / ± 300 ppm						
Supply Voltage (Vcc)	5Vdc $\pm 5\%$ (Standard)				3.3Vdc $\pm 5\%$		
Control Voltage(Vcon)	2.5Vdc (Standard)				1.65Vdc		
Control Voltage Range	0.5~4.5V (Suffix Blank) (Standard)				0.3~3.0V (suffix E)		
	0~5.0V (Suffix A)				0.5~2.5V (suffix F)		
	0.5~4.75V (Suffix C)				0~3.3V (suffix G)		
	0.5~5.0V (Suffix D)						
Slope	Positive						
Input Impedance	100 Ohms						
Linearity	10%						
SSB Phase Noise At 25°C	Offset	10 Hz	100Hz	1 kHz	10 kHz	100 kHz	
	3.3V-51.840MHz	-82dBc/Hz	-115dBc/Hz	-140 dBc/Hz	-150 dBc/Hz	-155 dBc/Hz	
	3.3V-155.520MHz	-80dBc/Hz	-110dBc/Hz	-125dBc/Hz	-135dBc/Hz	-142dBc/Hz	
Frequency Stability (max)	± 10 ppm	± 15 ppm	± 20 ppm	± 25 ppm	± 50 ppm	± 100 ppm	
Temperature Range (°C)	0 to 60°C	YES	YES	YES	YES	YES	YES
	0 to 70°C	YES	YES	YES	YES	YES	YES
	-10 to 60°C	YES	YES	YES	YES	YES	YES
	-10 to 70°C	YES	YES	YES	YES	YES	YES
	-20 to 70°C	BV1523 Only	YES	YES	YES	YES	YES
	-30 to 75°C	Contact Us	BV1523 Only	YES	YES	YES	YES
	-40 to 85°C	Contact Us	BV1523 Only	YES	YES	YES	YES
Frequency Stability	Vs. Supply Voltage	± 1.0 ppm (Vcc $\pm 5\%$ change)					
	Vs. Load Changes	± 1.0 ppm (Load $\pm 5\%$ change)					
	Vs. Load Changes	± 1.0 ppm					
Aging	± 3.0 ppm Max/Year(Standard)						
Storage Temperature	-55°C to 125°C						
Output Level	TTL			HCMOS			
	Level-1(V _H):2.4V			Level-1(V _H): 90%Vcc			
	Level-0(V _L):0.4V			Level-0(V _L): 10%Vcc			
BV1525 VCXO SERIES PART NUMBER GUIDE							
MODEL	STABILITY	Pull Range(Minimum)	Voltage	Control Voltage(Range)	OPER. TEMP. (°C)	Options	FREQ.
BV1525	A = ± 25 ppm	A= ± 100 ppm	Blank=5.0V	Blank=2.5V(0.5~4.5V)	Blank =0°C TO 70°C	G=Gullwing Pkg.	
	B = ± 20 ppm	B= ± 50 ppm	3=3.3V	A=2.5V(0~5.0V)	B=0°C TO 60°C		
	C = ± 15 ppm	C= ± 75 ppm		C=2.5V(0.5~4.75V)	C =-10 to 60°C		
	D = ± 10 ppm	E= ± 150 ppm		D=2.5V(0.5~5.0V)	H=-10°C TO 70°C		
	E = ± 50 ppm	F= ± 200 ppm		E=1.65V(0.3~3.0V)	D=-20°C TO 70°C		
	F = ± 100 ppm	G= ± 250 ppm		F=1.65V(0.5~2.5V)	E=-30°C TO 75°C		
		H= ± 300 ppm		G=1.65V(0~3.3V)	M=-40°C TO 85°C		
PART NUMBER EXAMPLE							
BV1525	A	A					10.0

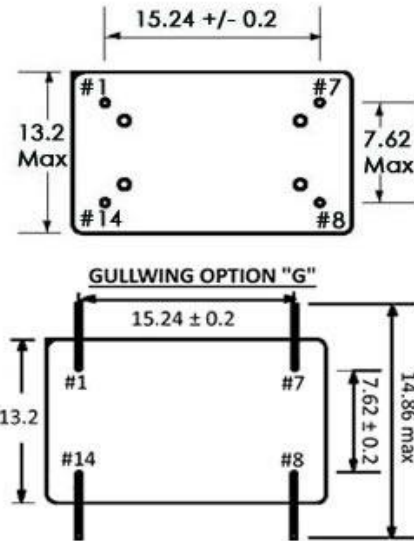


BV1525 SERIES

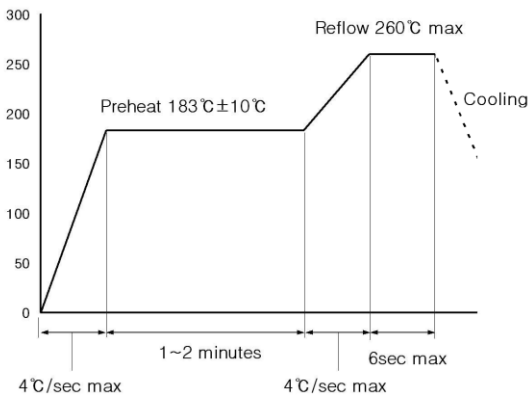
HCMOS/TTL DIL-14 VCXO



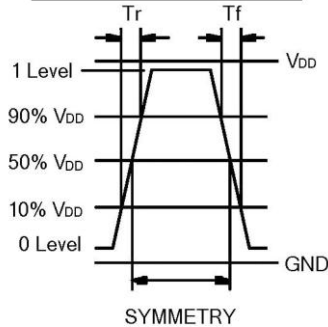
PIN CONNECTION	PIN #
CONTROL VOLTAGE	#1
GROUND	#7
OUTPUT	#8
SUPPLY VOLTAGE	#14



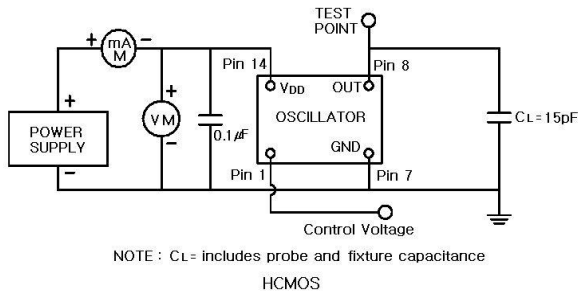
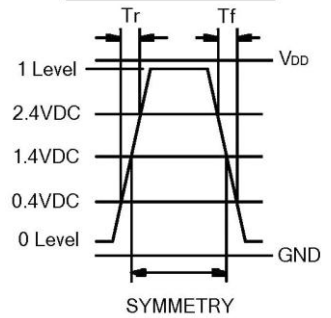
SOLDER REFLOW GUIDE



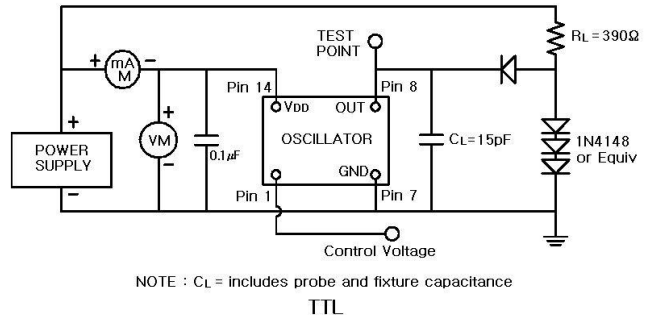
HCMOS WAVEFORM



TTL WAVEFORM



NOTE: CL = includes probe and fixture capacitance
HCMOS



NOTE: CL = includes probe and fixture capacitance
TTL